

Site Dumpers

NC
ENGINEERING



www.nc-engineering.com



PROBST
MAVEG

NC
ENGINEERING

SW
55 60

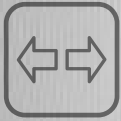
STABILE

NC
ENGINEERING

HARDOX
IN MY BODY



HT 18 10 HT 18 15 SW18 15



Clear dashboard layout

Twin lever control



Excellent service access



Tapered skip for maximum visibility



Twin lift cylinders



Four wheel drive
Twinlock system



Super bright
LED Lights



Protected hose lines

Fuse Box rated IP67

Folding ROPS

Unrivalled operator protection

Single pedal control

Heavy duty parallel linkage

Fully adjustable seat with recoil safety belt



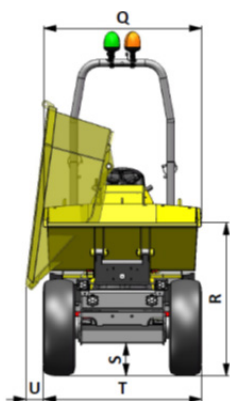
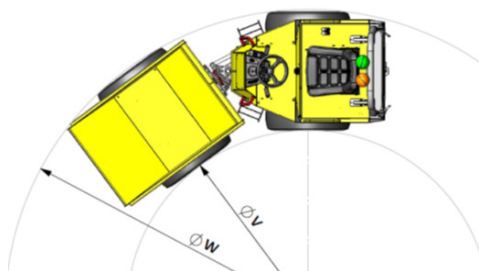
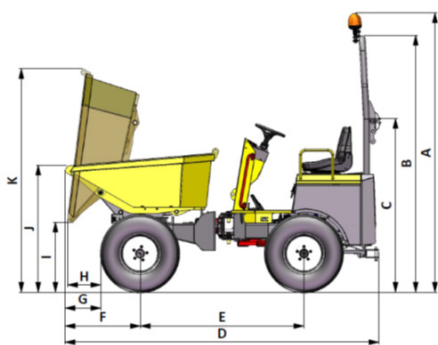
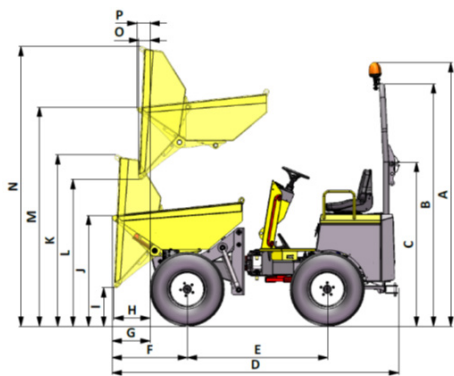
Inclinometer

Joystick control

Twin Cylinder Power Swivel 180°

High Definition Step & Handrails





STATIC DIMENSIONS in mm

	HT1810	HT1815	SW1815
A	2841	2841	2841
B	2613	2613	2613
C	1766	1766	1766
D	3068	3112	3166
E	1503	1648	1648
F	806	705	760
G	406	305	360
H	387	343	333
I	413	417	713
J	1194	1224	1292
K	1847	1924	2273
L	1580	1555	N/A
M	2361	2362	N/A
N	3014	3061	N/A
O	121	141	N/A
P	141	103	N/A
Q	985	1267	1297
R	1184	1199	1266
S	271	271	271
T	1129	1300	1300
U	N/A	N/A	143
V	3433	3654	3654
W	5735	6405	6405
Tipping Angle°	82°	85°	78°

CAPACITY:	HT1810	HT1815*	SW1815*
Max. safe load:	1000 kg	1500kg	1500kg
Unladen Weight:	1310kg	1415kg	1380kg
Heaped:	510L	805L	813L
Struck:	407L	644L	628L
Water:	305L	428L	480L

ENGINE:

Kubota D1105	
Displacement:	1.1 L
Max. power:	18.2kW/24.31bhp @ 3000 rpm
Max. torque:	71.5Nm @ 2200 rpm
Emissions to:	(EU) 2016/1628 & Tier 4 US EPA & CARB

TRANSMISSION:

Hydrostatic automotive "Twin Lock"
Permanent 4 wheel drive
Acceleration by foot pedal
Braking hydrostatic retardation

DRIVE CHARACTERISTICS:

Forward / Reverse	0-14 km/h (0-8.7 mph) 0-11km/h* (0-7mph*)
Steering angle:	+/- 36.5°
Turning Circle:	5.74m 6.41m*
Gradeability:	50%
Tyres:	10.0 / 75 -15.3 (traction Profile)
Steering:	Priority load sensing centre pivot
Working brakes:	Hydrostatic retardation
Park brake:	Automatic in rear wheel motors

NOISE LEVELS:

LWA	99dB(A)
LPA	81dB(A)

TANK CAPACITIES:

Fuel:	28L
Hydraulic:	25L

SKIP:

Hydraulically operated tipping skip for increased performance
Heavy duty fully welded skip
Reinforced around the top for greater strength

ELECTRICAL:

Heavy duty H075 Battery: 12V, 550CCA, 60Ah
Wiring harness in protective sleeving
Auxiliary outputs
Reversing alarm
Flashing amber beacon

HYDRAULICS:

Automotive control hydrostatic pump
Hydraulic test points fitted as standard
Easy access return oil filter on top of tank

SEATING & CONTROLS:

Adjustable suspension seat
Clear access across dumper
Super bright instrument display
Steel constructed centre console for extra leg protection
Column mounted directional control lever
Anti-slip floor
Highlighted steps + handrails

SERVICE ACCESS:

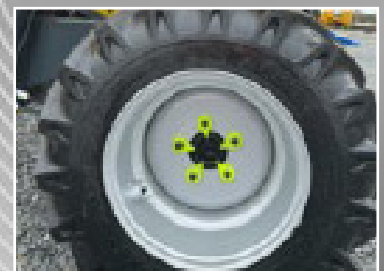
Easy access for service maintenance
Lockable hinged engine cover
Battery mounted inside the engine bay

We reserve the right to change the above specification without prior notice.

Optional Extras

O = Option N/A = Not Available

Option	HT1810	HT1815	SW1815
Hardox Skip	NA	NA	O
Special Colour RAL (yellow parts only)	O	O	O
Green Seat Belt Light	O	O	O
Fixed Warning Triangle	NA	NA	NA
Folding Warning Triangle	O	O	O
Mirrors	O	O	O
Wheel Choc	O	O	O
Road Lights	O	O	O
Recovery Hitch	O	O	O
Scharmuller Hitch	O	O	O
7 pin towing socket (only available with road lights option)	O	O	O
7 pin towing socket for Scharmuller hitch (only available with road lights option)	O	O	O
Grass Pattern Tyres	O	O	O
Panolin Bio Oil	O	O	O
Telematics Tracking Device	O	O	O
Toolbox	O	O	O
Wheel Nut Indicators	O	O	O
Speed Decal	O	O	O
Parking Light Switch (only available with road lights option)	O	O	O
Weather Cover for Seat inc. storage box	O	O	O
Day Time Running Lights (only available with road lights option)	O	O	O
Guard on Rear of Skip	NA	NA	NA
Front Number Plate Mounting Bracket	NA	NA	O
Lockable Diesel Cap	O	O	O
Lock for Hydraulic tank	O	O	O
CESAR datatag system	O	O	O
First Service Filter kit	O	O	O
Inching pedal	NA	NA	NA
Spare Wheel Assembly	O	O	O
Side Marker lights on mudguards	NA	NA	NA
Narrow wheels & tyres	O	NA	NA
White Noise Reverse Alarm	O	O	O
Front Tow Bracket	NA	NA	NA
Rear Reflectors	O	O	O



SW 19 30



Site mode
speed limiter

Super bright
LCD Display
IP67 rated



Two stage
start inhibitor
safety system



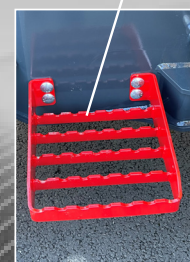
Front & Rear
Guarded lights

Front facing
150° wide
angle camera

Hydraulic parking brake
(SAHR) No in field
adjustment required



High definition
steps+handrails



Service access via
lockable bonnet



Integrated
Toolbox



Protected IP67
rated 7" LCD
Monitor

Sealed
Fusebox IP67

Green beacon seat
belt system (option)

180° Powerswivel
bucket

Solid steel
rear cover for
maximum
impact protection



Multi axis joystick control

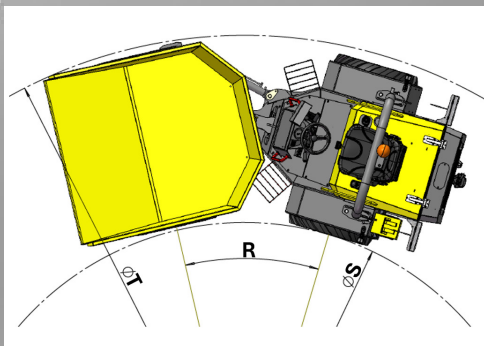
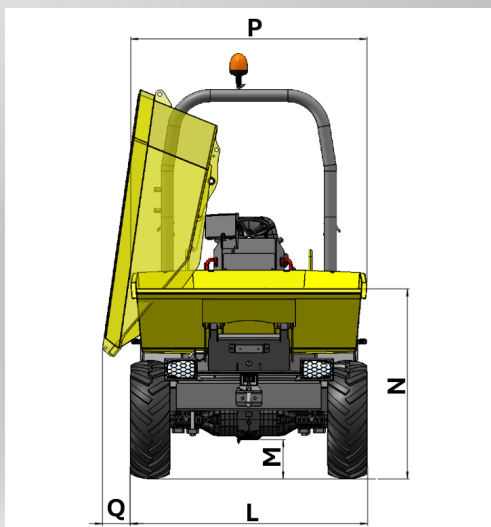
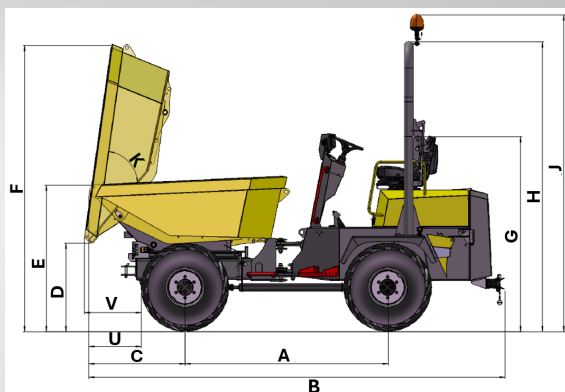
Nitrotec coated
pivot pins for
extended life



Inclinometer

Fully adjustable suspension
seat with recoil safety belt
and document pouch

Super bright LED rear
lights with sequential
indicators



STATIC DIMENSIONS in mm

A	2000
B	4106
C	955
D	873
E	1436
F	2823
G	1914
H	2848
J	3112
L	1730
M	288
N	1385
P	1722
Q	186
S	5009
T	8700
U	522
V	558

CAPACITY:

Max. safe load:	3000kg
Unladen Weight:	2430kg
Heaped:	1663L
Struck:	1242L
Water:	910L

SW 19 30

ENGINE:

Make	Kubota 3 Cyl water cooled
Model	D1105
Displacement:	1.1 L
Max. power:	18.2kW/24.4bhp @ 3000 rpm
Max. torque:	72Nm @ 2200 rpm
Fuel:	Diesel
Emissions to:	(EU) 2016/1628 & Tier 4 US EPA & CARB

TRANSMISSION:

Switchable twin mode hydrostatic CVT
Permanent 4-wheel drive

DRIVE CHARACTERISTICS:

Forward / Reverse	0-20 km/h / 0-12.5 mph
Steering angle:	+/- 33°
Turning Circle:	8.7m
Gradeability:	50%
Tyres (Traction Profile):	11.5/80-15.3 12PR
Steering:	Priority load sensing hydrostatic centre pivot
Working brakes:	Multi-plate oil immersed discs mounted on front axle
Park brake:	Hand operated (SAHR) spring applied hydraulically released

NOISE LEVELS:

LWA	101dB(A)
LPA	80dB(A)

TANK CAPACITIES:

Fuel:	40L
Hydraulic:	34L

SKIP:

Hydraulically operated skip tipping to 77.5°
Heavy duty fully welded skip with high tensile sides 6 mm base
Reinforced with Domex steel around top for greater strength
Operated by a multi axis joystick for increased performance

ELECTRICAL:

Battery: 075E 12V, 550CCA, 60Ah
Wiring harness in protective sleeving with auxiliary outputs

HYDRAULICS:

Automotive control hydrostatic pump
Hydraulic test points fitted as standard
Easy access return oil filter on top of tank

SEATING & CONTROLS:

Adjustable suspension seat accessible from both sides
Clear access across dumper
High definition steps and handrails
Super bright instrument display
Steel constructed centre console for extra leg protection
Column mounted directional control lever
Anti-slip floor

SERVICE ACCESS:

Easy access for service/ maintenance
Lockable hinged engine bay doors
Battery mounted inside the engine bay

STANDARD EQUIPMENT:

Flashing amber beacon
Reversing alarm
Recovery hitch
Forward facing camera c/w 7" LCD monitor
Inclinometer

We reserve the right to change the above specification without prior notice.

Optional Extras

Base unit:

Hardox Skip

Special Colour RAL (yellow parts only)

Safety:

Green Light Seat belt warning System

Warning Triangle

Wheel Choc

Mirrors

Towing:

7 pin Towing Socket

ScharmullerTow Hitch

Tyres:

Grass Pattern 11.5/80-15.3 14PR

Environment:

Panolin Bio in Lieu of HVLP 46

Security:

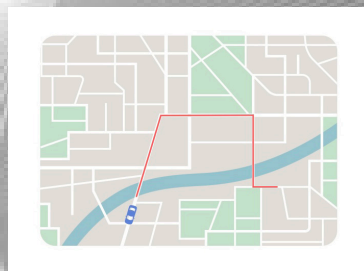
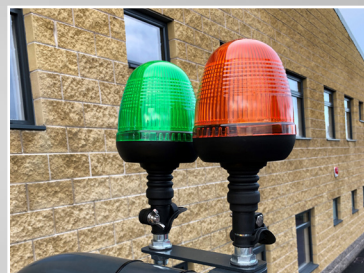
Cesar Datatag

Telematic Tracking

Maintenance:

Planned Service kits

Toolbox



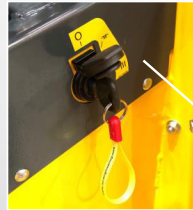
*based on data supplied by engine manufacturers rated speed

SW 55 50 SW 55 60



Site mode
speed limiter

Super bright
LCD Display
IP67 rated



Two stage
start inhibitor
safety system

Folding ROPS,
FOPS safety
Frame



Guarded
lights

Front facing
150° wide
angle camera



Hydraulic parking brake
(SAHR) No in field
adjustment required



Highlighted
Steps + Handrails

Nitrotec coated pivot pins
for extended life





Service Access
Via Lockable
Bonnet



Protected IP67
rated 7" LCD
Monitor

15mm solid steel rear
cover for maximum
impact protection



Multi axis joystick

180°
Powerswivel

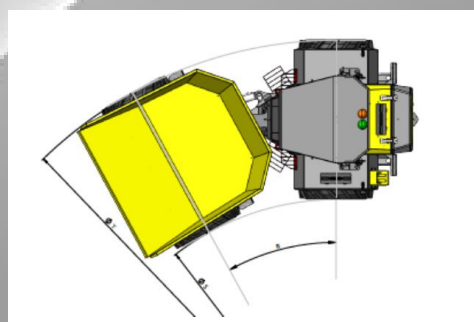
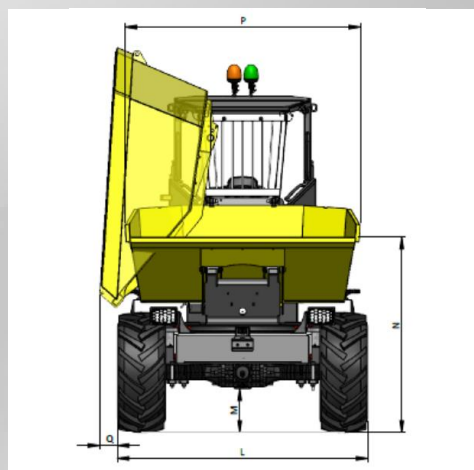
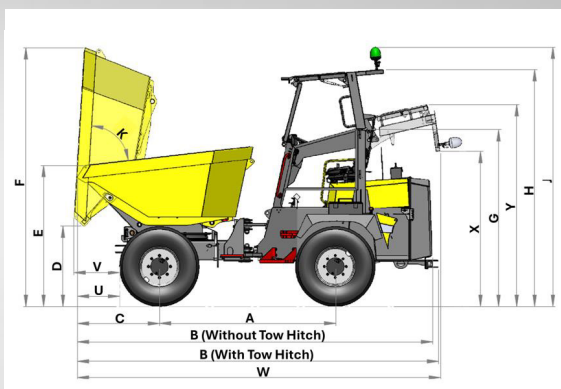
LED rear lights



Inclinometer

Fully adjustable suspension
seat with recoil safety belt
and document pouch





STATIC DIMENSIONS in mm		
	SW5550-C	SW5560-C
A	2210	2490
B	4530	4621
C	1030	974
D	993	1115
E	1767	1863
F	3230	3438
G	2214	2251
H	2967	3005
J	3248	3285
L	1815	2242
M	367	404
N	1667	1746
P	1920	2106
Q	292	156
S	5947	7452
T	9870	12000
U	529	434
V	565	493
W	4553	4638
X	1940	1940
Y	2529	2529

CAPACITY:	SW5550-C	SW5560-C
Max. safe load:	5000kg	6000kg
Unladen Weight:	3825kg	42000kg
Heaped:	2633L	3150L
Struck:	2110L	2444L
Water:	1368L	1650L

SW5550
SW5560

ENGINE:	
Make	Doosan 4 Cyl water cooled
Model	D24 DM02VB
Displacement:	2.4 L
Max. power:	55.4kW/74.3bhp @ 2600 rpm
Max. torque:	320Nm @ 1600 rpm
Fuel:	Diesel
Emissions to:	(EU) 2016/1628

TRANSMISSION:	
	Switchable twin mode hydrostatic CVT
	Permanent 4-wheel drive

DRIVE CHARACTERISTICS:		
Forward / Reverse	0-25 km/h	0-26 km/h
	0-15.5 mph	0-16.1 mph
Steering angle:	+/- 32°	+/- 29°
Turning Circle:	9.87m	12m
Gradeability:	50%	50%
Tyres:	12.5/80-18 16PR	405/70-20
Steering:	Priority load sensing hydrostatic centre pivot	
Working brakes:	Multi-plate oil immersed discs mounted on front axle	
Park brake:	Hand operated (SAHR) spring applied hydraulically released	

NOISE LEVELS:		
LWA	101dB(A)	101dB(A)
LPA	83dB(A)	85dB(A)

TANK CAPACITIES:		
Fuel:	56L	56L
Hydraulic:	54L	54L

SKIP:
Hydraulically operated skip tipping to 82°
Heavy duty fully welded skip with high tensile sides 8 mm base
Reinforced around top for greater strength
Operated by a multi axis joystick for increased performance

ELECTRICAL:
Super heavy duty 100SPPLA Battery: 12V, 700CCA, 74Ah
Wiring harness in protective sleeving with auxiliary outputs

HYDRAULICS:
Automotive control hydrostatic pump
Hydraulic test points fitted as standard
Easy access return oil filter on top of tank

SEATING & CONTROLS:
Adjustable suspension seat accessible from both sides
Clear access across dumper
High definition steps and handrails
Super bright warning lights on fully featured display instrument
Steel constructed centre console for extra leg protection
Column mounted directional control lever
Anti-slip floor

SERVICE ACCESS:
Easy access for service/ maintenance
Lockable hinged engine bay doors

STANDARD EQUIPMENT:
Road lighting
Forward facing camera c/w 7" LCD monitor
Flashing amber beacon
Reversing alarm
Recovery hitch
Folding ROPS, FOPS, safety frame
Inclinometer

Optional Extras

Base unit:

Hardox Skip
Special Colour RAL (yellow parts only)

Cabin:

Rops, Fops Cab Level 2
Air Conditioning
Screen Guard

Towing:

Scharmuller Tow Hitch
7 pin Towing Socket

Tyres:

Grass Pattern 405/70-20

Environment:

Panolin Bio Hydraulic Oil
in Lieu of HVLP 46 Hydraulic Oil

Security:

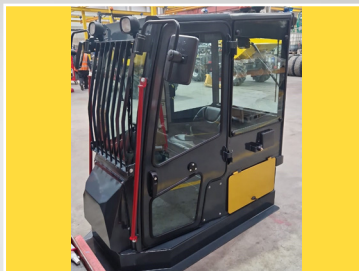
Cesar Datatag
Telematic Tracking

Additional Safety Options:

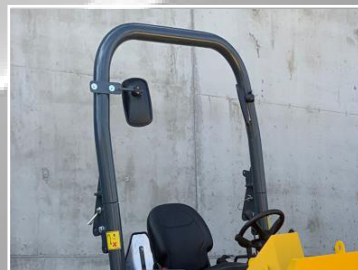
Bucket Guard
Radar
360° Camera
Green Light Seat belt warning System
Warning Triangle
Wheel Choc
Mirrors (Rear view attached to Roll Bar)

Maintenance:

Planned Service kits
Toolbox



Coming
Soon



*based on data supplied by engine manufacturers rated speed



Rev 3 - July 2025



NC Engineering (Hamiltonsbawn) Ltd
2 Killyrudden Road
Hamiltonsbawn,
Co. Armagh
Northern Ireland
BT61 9SF
Tel: +44 (0) 28 38 871970
E-Mail: sales@nc-engineering.com
Web: www.nc-engineering.com

www.nc-engineering.com